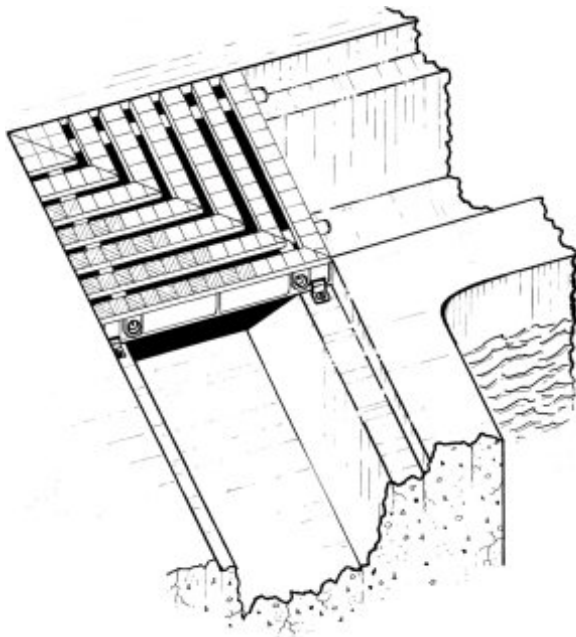




4" - 20" PERPENDICULAR GRATE INSTALLATION & MAINTENANCE INSTRUCTIONS

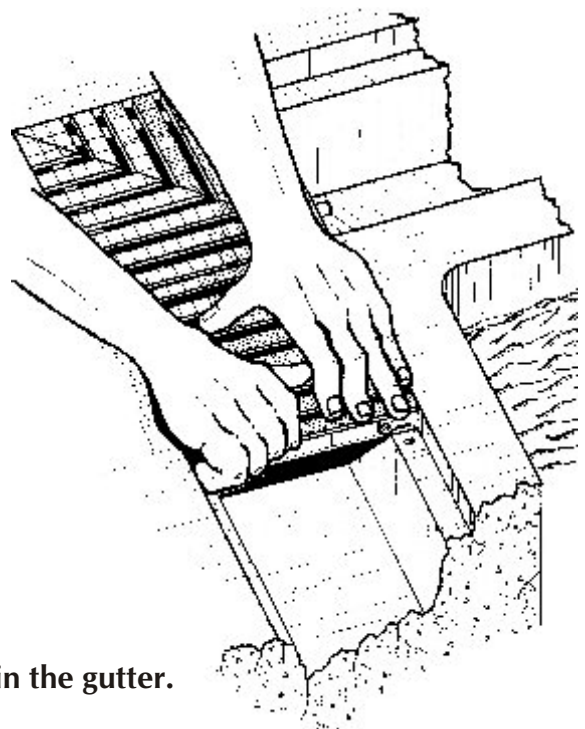
STRAIGHT SECTIONS



The modular, interlocking grate corners are pre-assembled in one foot sections. Always commence at one point (corner) and add only in the same direction to come back to the starting point. **Do not try to meet in the middle.**

IMPORTANT

The horizontal ledge (or lip) the grate rests on must be level and even on both the vertical and horizontal directions. For best results, use the Heavy Duty Curb Angle.

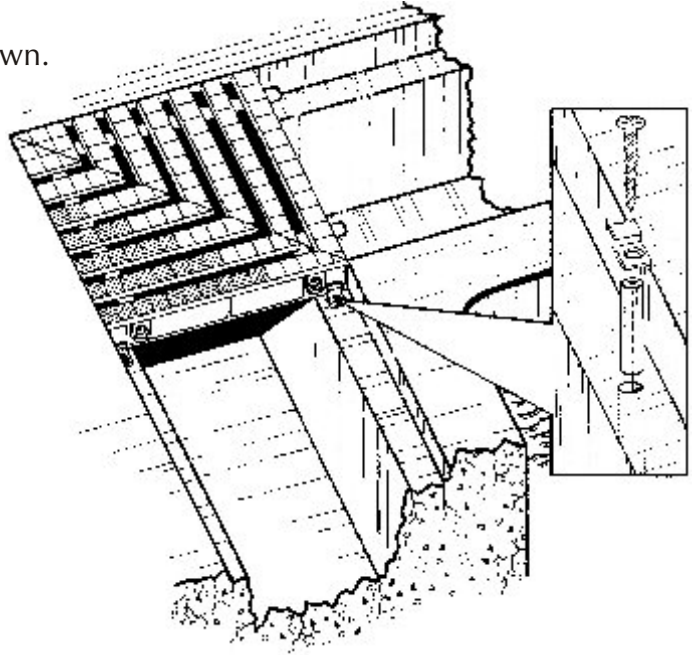


Lay the first section in the gutter.

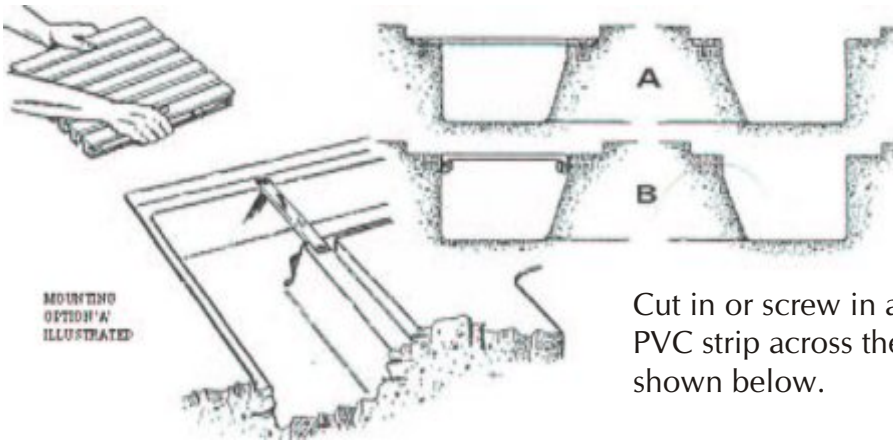
STRAIGHT SECTIONS (CONT)

Insert a clip, drill, anchor and screw down as shown.

You need to fasten down every 3 feet, alternating sides. Some engineers require this to be done every foot. Check your job specifications. Do not hammer the sections into each other. If you do, there is no room for thermal expansion. We recommend regular, or at least annual inspections of fastening to ensure there has been no tampering or abuse.

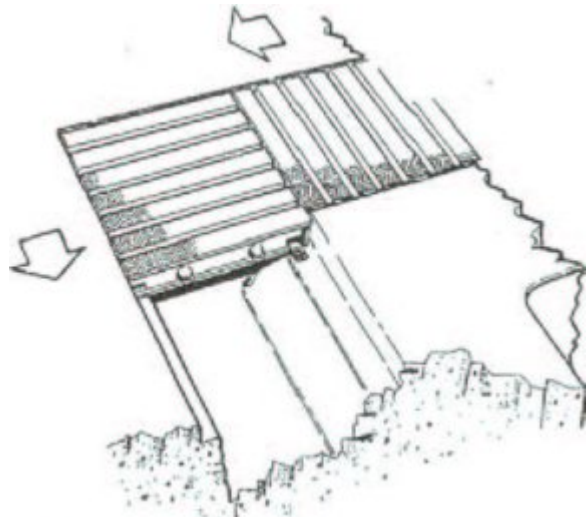


CORNERS - 90 DEGREE BUTT END



Cut in or screw in a 1" wide stainless steel piece or PVC strip across the open section for support as shown below.

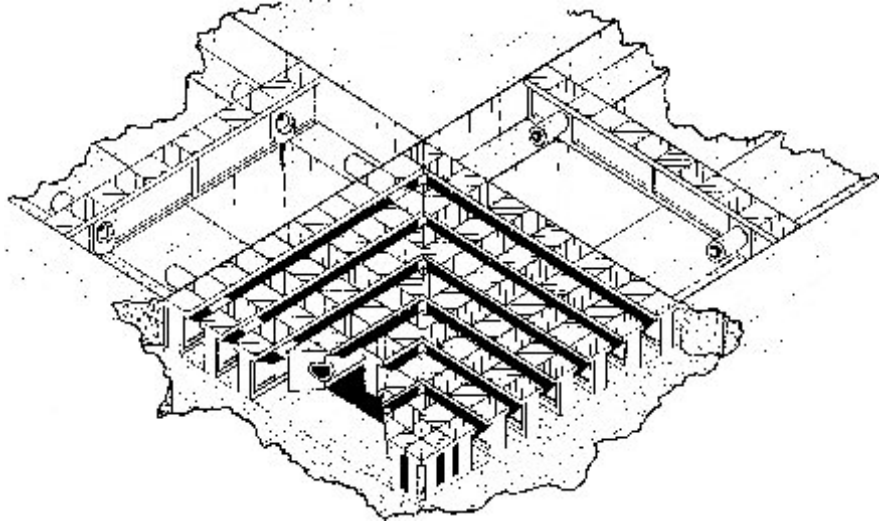
Lay in the first piece of grating, anchor down and continue laying in the same direction. To end up at the exact length, cut or grind the male ends of the last few bars to narrow up the spacing.



Mitered 90 degree and Other Degree Corners

90 degree, 45 degree, or other angled corners can be specially made to order. If they are not standard corners, templates are required to ensure they fit the gutter correctly.

Corners are made of the same size PVC material used for the grating. The grating is mitered to fit the degree of the corner with a fiberglass "T" bar recessed into the cut for strength and durability. Corners can be sloped to fit the contour of the gutter.



IMPORTANT

It is important to have the corners cut in correctly so they line up with the other grate. This ensures there is not looseness and unnecessary stress put on them. Corner grates must be fastened with one fastener on the inbound corner and multiple fasteners spaced at maximum 8 inch interval on the two outbound sides.

Cleaning and Maintenance

Keep the grate clean of debris and other matter by brushing and using a soap as you would clean pool tile. This prevents stains and keeps the grate looking new.

Regularly check to insure the grate is securely fastened.

Radius Sections

These are laid the same as straight sections except you set the inside sockets tight and the outside ones more open. Radius gutters should be formed for a tight fit and be uniform. With the inside sockets tight; fasten the outside (more open side of the grate) every 6" to 12" if necessary, depending on the radius.

On tight radiuses, the inside male end connectors will need shaving. For example, on a 12" grate, any radius under 6'6" will require special attention. Any radius under 2'6" will need to be fabricated by the manufacturer. A one foot radius is the smallest we can achieve. When setting the radius grate, a caulking material such as silicone may be used on the connectors to prevent slippage.

